

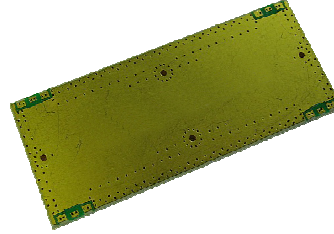
November 16, 2009

## Datasheet

## WIDE BANDWIDTH 1700-10000 MHz

### Features:

- ▶ ITAR-Free
- ▶ Excellent Performance
- ▶ Wide Bandwidth
- ▶
- ▶



Specifications:	Without Matching	With ext. Matching Structure
Frequency	1700-10000 MHz	
Insertion Loss (Typ/Max)	0.5dB/0.6dB	0.5dB/0.6dB
Coupling(Typ/Max)	20.4dB/±1dB	
Directivity(Typ/Min)	14.8dB/8dB	15.6dB/10dB
Return Loss(Typ/Min)	18dB/16.4dB	21dB/18.4dB
Input Power Rating	25 W	
Operating Temp	-45 to +85 °C	

*All Parameters for RO4003C / 16mil customer boards!*

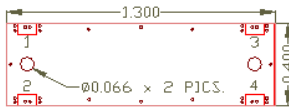
### Phasing Diagram:

in \ out	1	2	3	4
1		coupled	thru	iso
2	coupled		iso	thru
3	thru	iso		coupled
4	iso	thru	coupled	

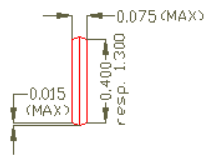
\* for port numbering see outline drawing

**Outline Drawing:**

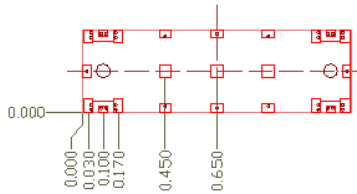
TOP VIEW



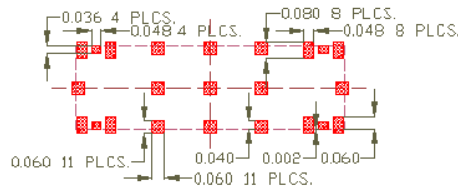
SIDE VIEW



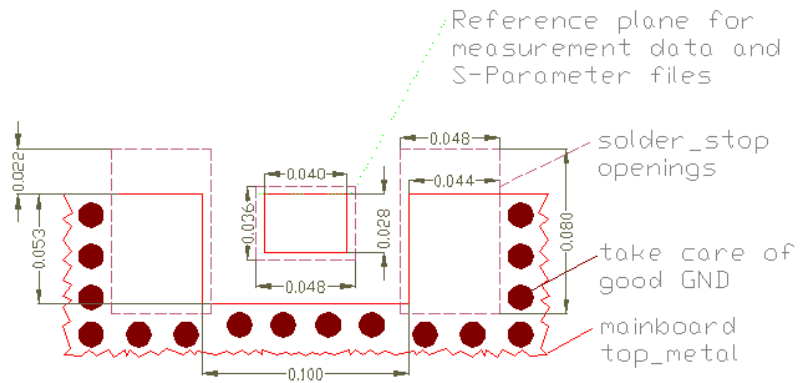
BOTTOM VIEW



RECOMMENDED Solder\_stop OPENINGS

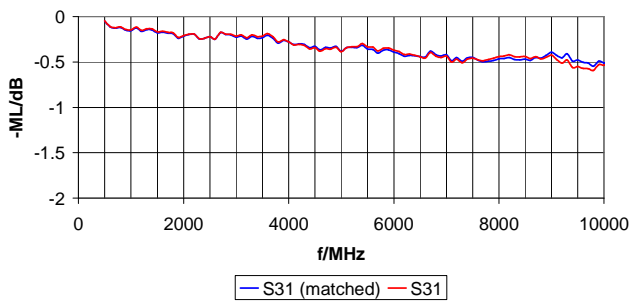


RECOMMENDED PORT LAYOUT

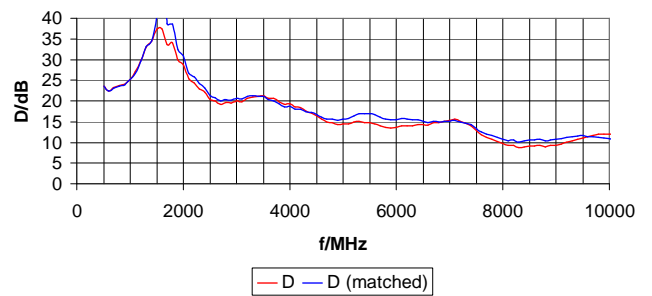


**Performance Plots:**

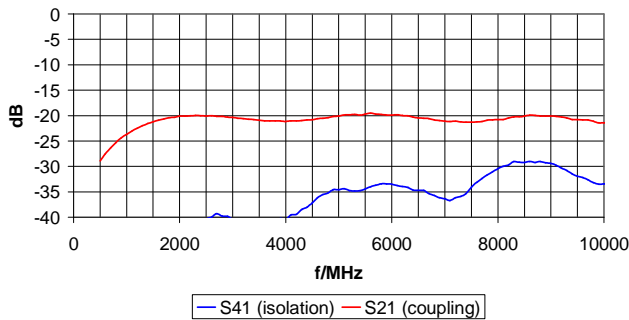
**Main-line Loss**  
(on Rogers RO4003C-16mil with and without external matching applied)



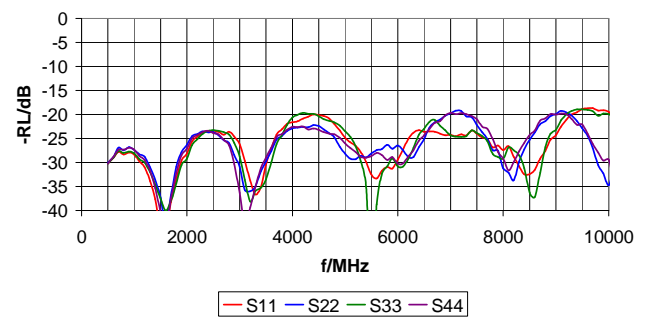
**Directivity**  
(on Rogers RO4003C-16mil with and without external matching applied)



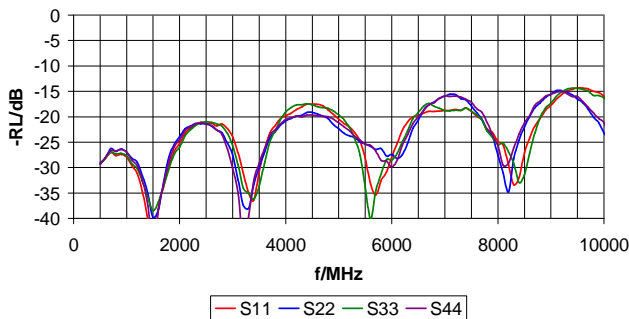
**Coupling and Isolation**  
(on Rogers RO4003C-16mil)



**Return Loss**  
(on Rogers RO4003C-16mil with external matching applied)



**Return Loss**  
(on Rogers RO4003C-16mil)



**Coupling and Isolation**  
(on Rogers RO4003C-16mil with external matching applied)

