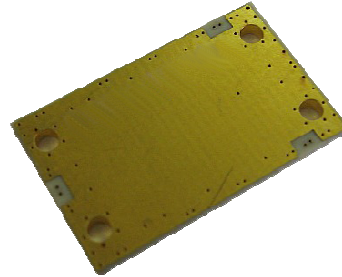


## Datasheet

## WIDE BANDWIDTH 1000-8000 MHz

### Features:

- ▶ ITAR-Free
- ▶ Excellent Performance
- ▶ Wide Bandwidth
- ▶ Small Size, Surface Mount
- ▶



### Applications:

- ▶ Signal Splitting And Low Power Combining

Specifications:	Without Matching	With ext. Matching Structure
Frequency Range	1000-8000 MHz	
Insertion Loss (Typ, Max)	0.7dB/1.5dB	0.7dB/1.5dB
Amplitude Umbalance(Typ/Max)	<0.1dB/ 0.2dB	<0.1dB/ 0.2dB
Isolation (Typ, Min)	27dB/21dB	27dB/21dB
Phase Error(Typ/Max)	0.5°/2°	0.5°/2°
Return Loss (Typ, Min)	21dB/15dB	21dB/15dB
Input Power Rating *	5 W	
Operating Temp	-40 to +85 °C	

All Parameters for RO4003C / 16mil customer boards!

\* Maximum Input Power for Splitter Mode with matched outputs

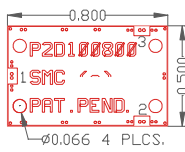
### Port Configuration:

**1:        INPUT**  
**2 ,3:    OUTPUT**

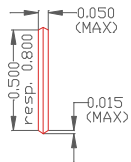
\* for port numbering see drawing above

**Outline Drawing:**

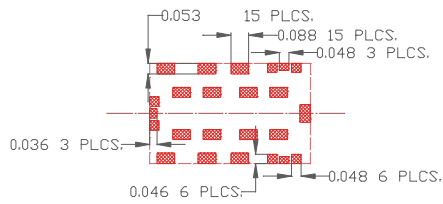
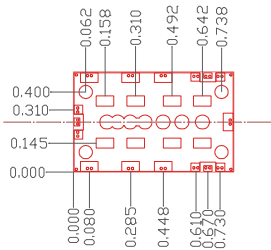
TOP VIEW



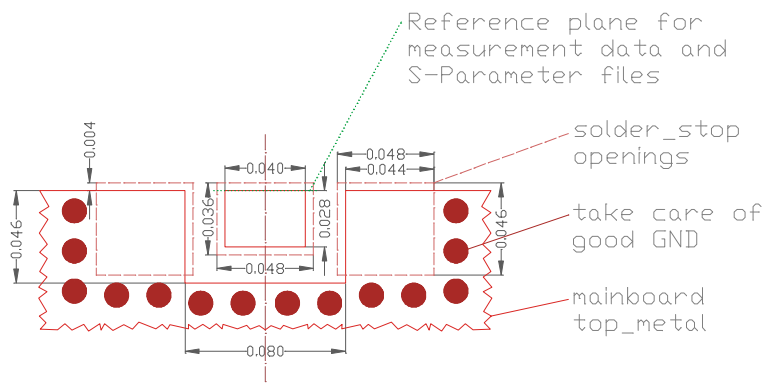
SIDE VIEW



BOTTOM VIEW



RECOMMENDED Solder\_stop OPENINGS



RECOMMENDED I/O PORT LAYOUT

**Performance Plots:**

