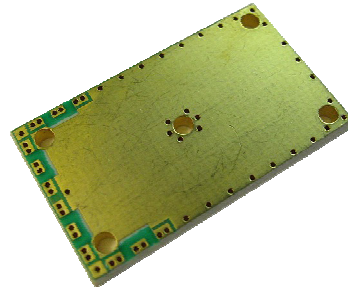


Datasheet

Features:

- ▶ ITAR-Free
- ▶ Excellent Performance
- ▶ Wide Bandwidth
- ▶ Small Size, Surface Mount
- ▶ Building Block For:
 - Power Amplifiers
 - Image Rejection Mixers
 - I & Q / SSB Modulators
 - Phase Shifters & More...



Specifications:	Without Matching	With ext. Matching Structure
Frequency	800-3000 MHz	
Amplitude Imbalance(Typ/Max)	0.5dB/ 0.85dB	0.5dB/ 0.85dB
Phase Error(Typ/Max)	2°/4°	2°/2.6°
Directivity(Typ/Min)	16dB/15dB	18dB/17.5dB
Insertion Loss(Typ/Max)	0.3dB/0.4dB	
Return Loss(Typ/Min)	20dB/12.5dB	20dB/17dB
Input Power Rating	25 W	
Operating Temp	-40 to +85 °C	

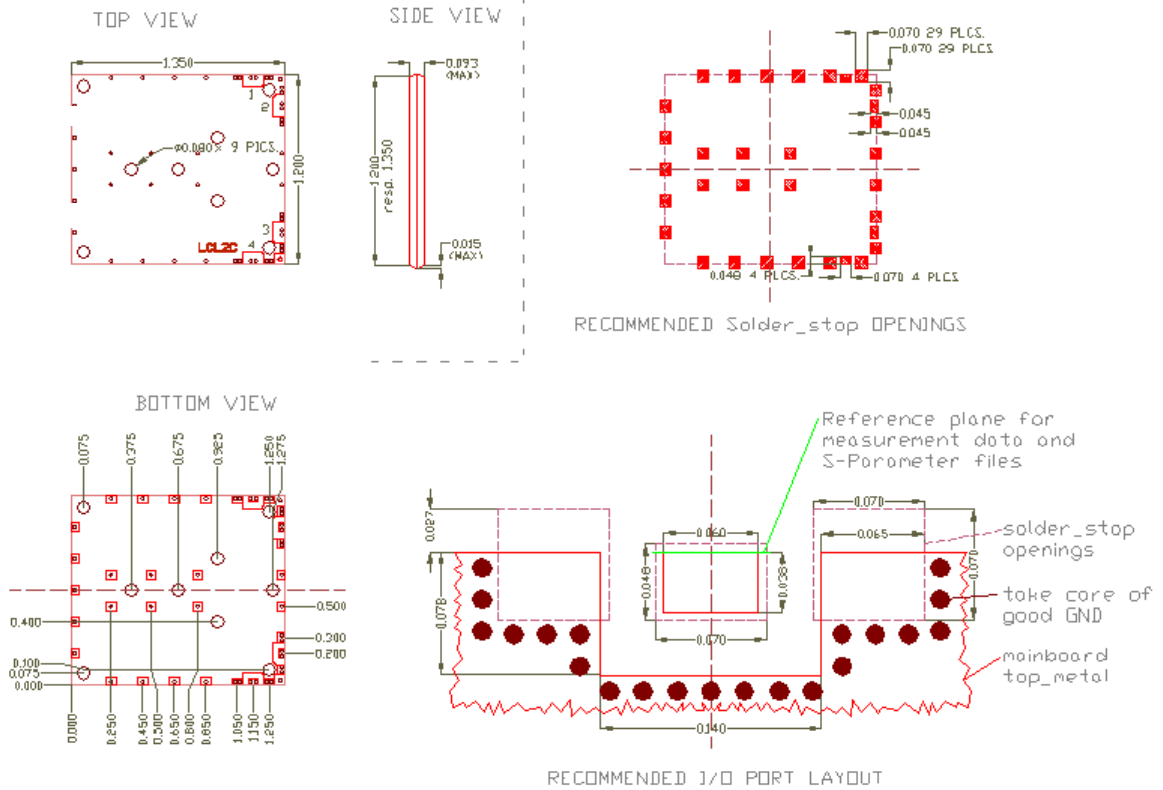
All Parameters for RO4003C / 16mil customer boards!

Phasing Diagram:

in \ out	1	2	3	4
1		thru	90°	iso
2	thru		iso	90°
3	90°	iso		thru
4	iso	90°	thru	

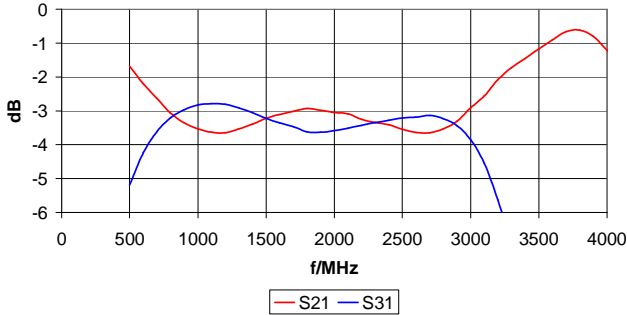
* for port numbering see outline drawing

Outline Drawing:

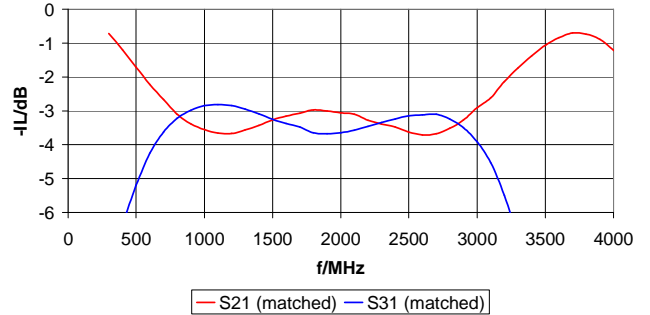


Performance Plots:

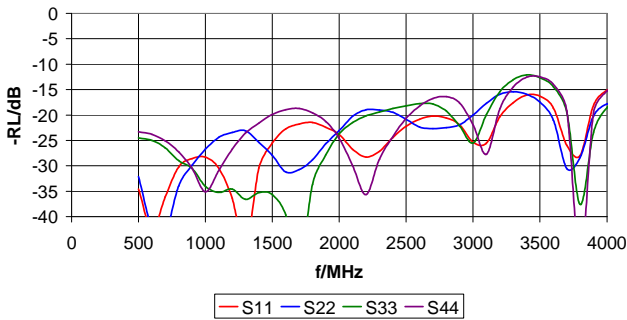
Transmission and Coupling
(on Rogers RO4003C-16mil)



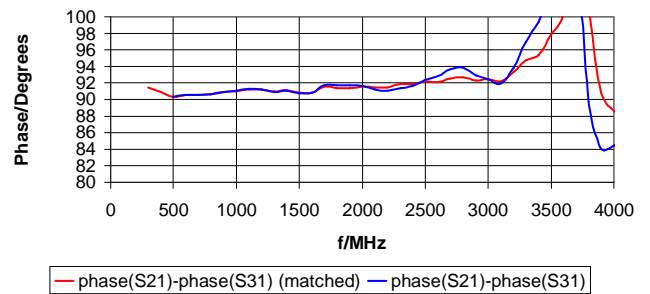
Insertion Loss
(on Rogers RO4003C-16mil with external matching applied)



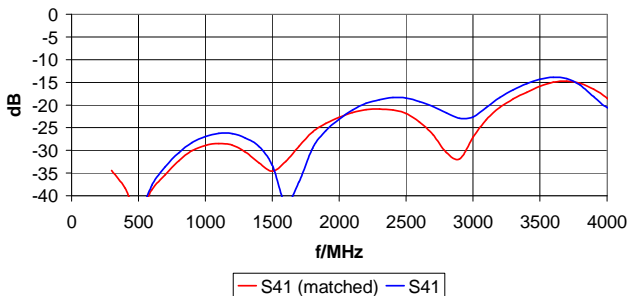
Return Loss
(on Rogers RO4003C-16mil)



Phase Error
(on Rogers RO4003C-16mil with and without external matching applied)



Isolation
(on Rogers RO4003C-16mil with and without external matching applied)



Return Loss
(on Rogers RO4003C-16mil with external matching applied)

