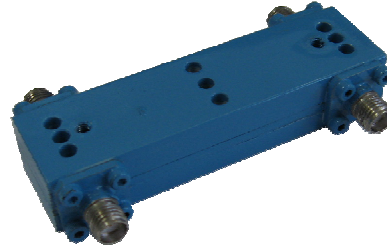


Datasheet

WIDE BANDWIDTH 1000-8000 MHz

Features:

- ▶ ITAR-Free
- ▶ Excellent Performance
- ▶ Wide Bandwidth
- ▶
- ▶



<i>Specifications:</i>	
Frequency	1000-8000 MHz
Insertion Loss (Typ/Max)	0.3dB/0.7dB
Coupling(Typ/Max)	20dB/±2.5dB
Directivity(Typ/Min)	18dB/5dB
Return Loss(Typ/Min)	20dB/15dB
Input Power Rating	25 W
Operating Temp	-45 to +85 °C

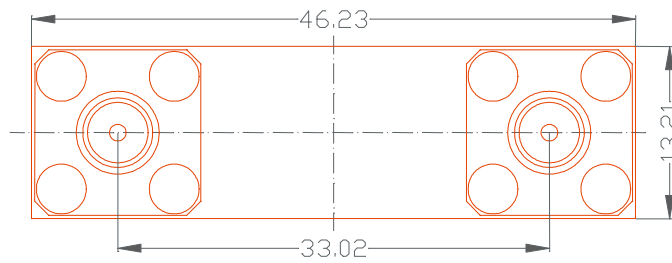
Phasing Diagram:

in \ out	1	2	3	4
1		coupled	thru	iso
2	coupled		iso	thru
3	thru	iso		coupled
4	iso	thru	coupled	

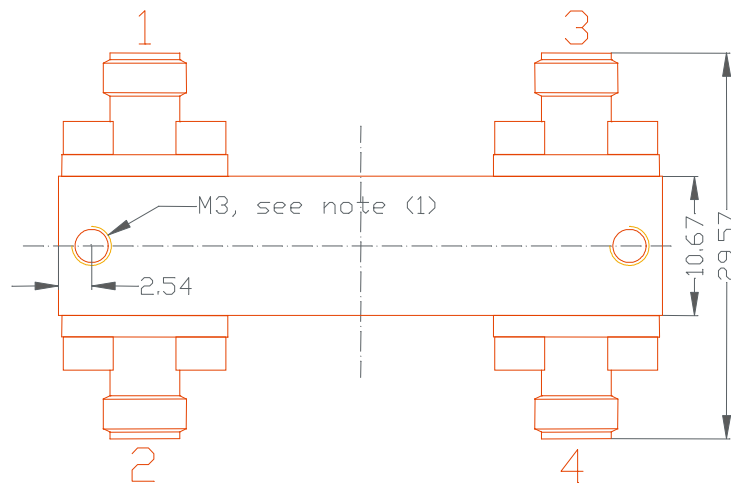
* for port numbering see outline drawing

Outline Drawing:

FRONT VIEW



TOP VIEW



(1) device mounting holes, exist on both sides, use M3 screws max. 3mm long

all units in mm

Performance Plots:

