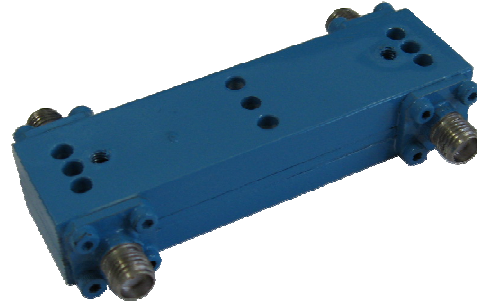


## Datasheet

### Features:

- ▶ ITAR-Free
- ▶ Excellent Performance
- ▶ Wide Bandwidth



### Specifications:

<b>Frequency</b>	1000-8000 MHz
<b>Insertion Loss(Typ/Max)</b>	0.3dB/0.7dB
<b>Isolation(Typ/Min)</b>	18dB/5dB
<b>Return Loss(Typ/Min)</b>	20dB/15dB
<b>Input Power Rating</b>	50 W
<b>Operating Temp</b>	-40 to +85 °C

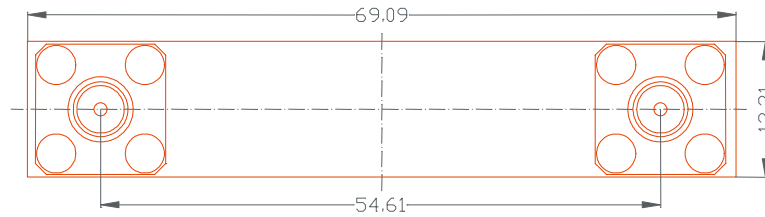
### Phasing Diagram:

in \ out	1	2	3	4
1		0°	ISO	90°
2	0°		90°	ISO
3	ISO	90°		0°
4	90°	ISO	0°	

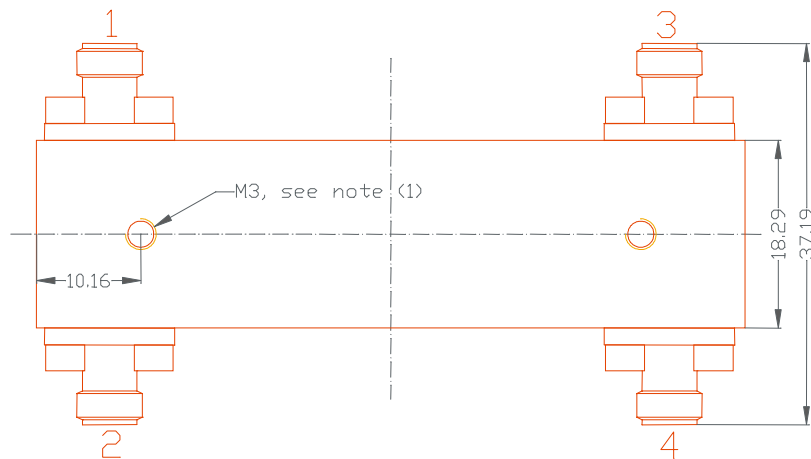
\* for port numbering see outline drawing

**Outline Drawing:**

FRONT VIEW



TOP VIEW

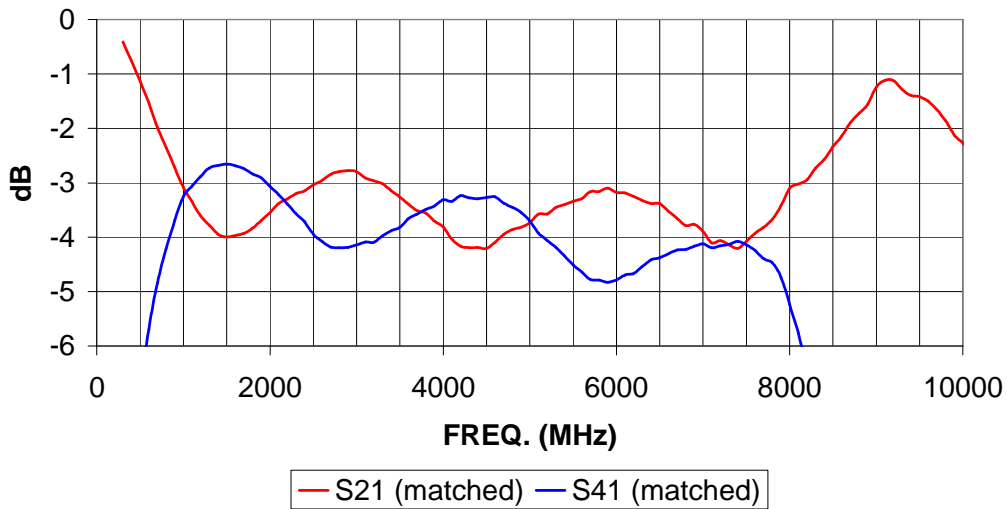


(1) device mounting holes, exist on both sides, use M3 screws max. 3.5mm long

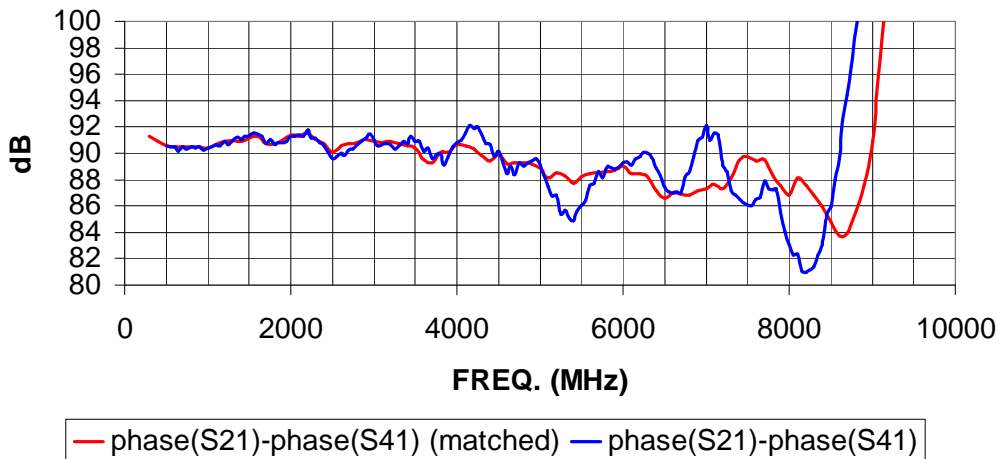
all units in mm

**Performance Plots:**

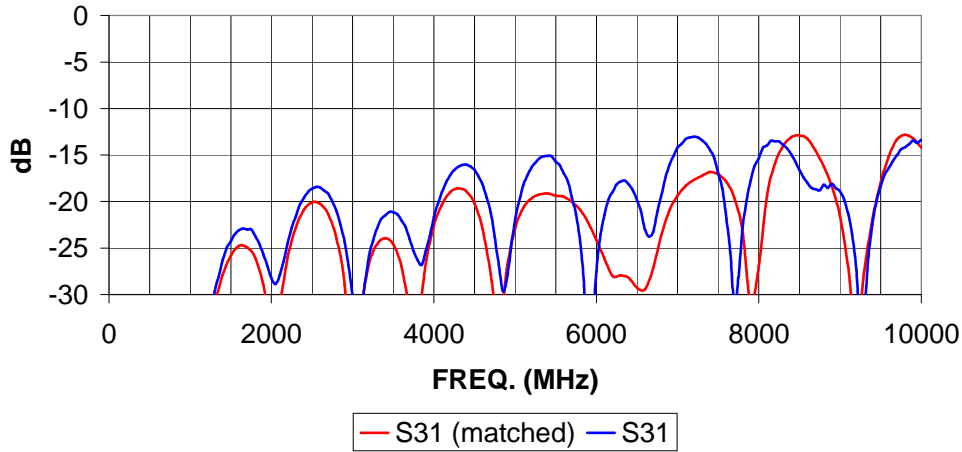
**Insertion Loss**  
(on Rogers RO4003C-16mil with external matching applied)



**Phase Unbalance**  
(on Rogers RO4003C-16mil with external Matching applied)



### ISOLATION (on Rogers RO4003C-16mil with and without external Matching applied)



### Return Loss (on Rogers RO4003C-16mil with external Matching applied)

